

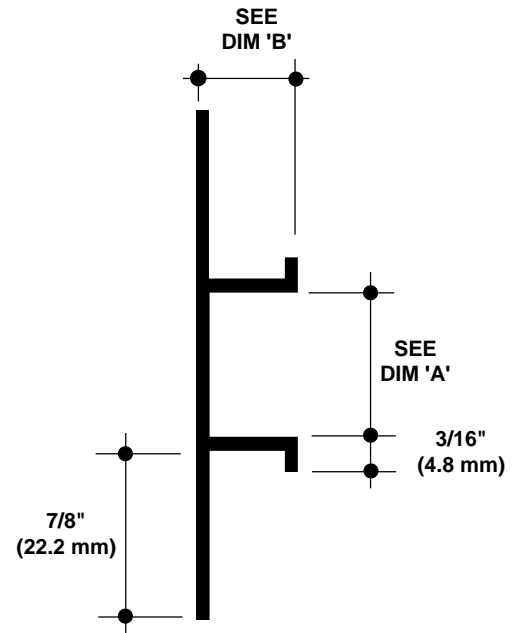
# DCS SERIES CHANNEL SCREED

Specify as: **Pittcon Plaster Molding**

Model No. **DCS-xx-xxx**  
**DCS-xx-V-xxx (vented)**

MATERIAL: Aluminum alloy.....6063 T5  
Finish.....Clear Anodized  
Thickness......050" nominal

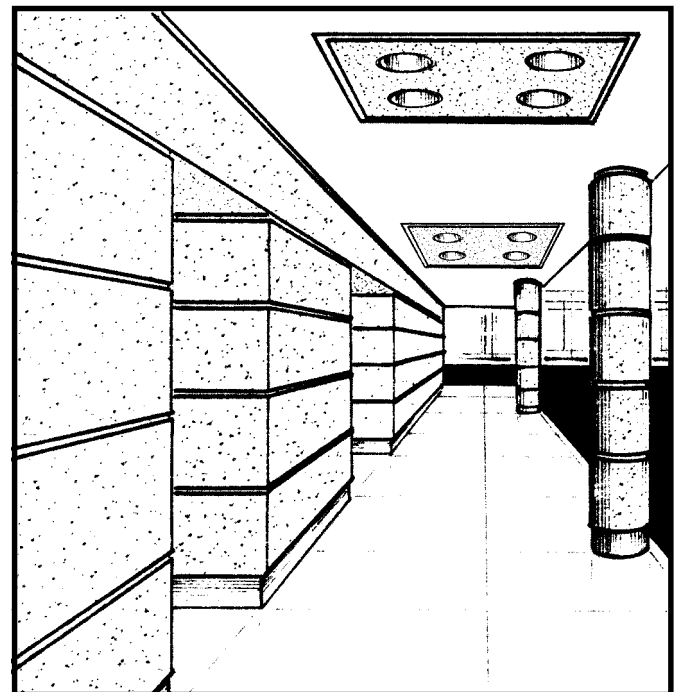
Many optional finishes are available. Consult factory for pricing and availability. Finishes meet or exceed AAMA standards for scratches or blemishes.



NO SCALE

TYPICAL SECTION

Model No.	Width-Dim 'A'	Depth-Dim 'B'
DCS-50-50	1/2" (12.7mm)	1/2" (12.7mm)
DCS-50-V-50	1/2" (12.7mm)	1/2" (12.7mm)
DCS-50-75	3/4" (19.1mm)	1/2" (12.7mm)
DCS-50-V-75	3/4" (19.1mm)	1/2" (12.7mm)
DCS-50-100	1" (25.4mm)	1/2" (12.7mm)
DCS-50-V-100	1" (25.4mm)	1/2" (12.7mm)
DCS-50-150	1-1/2" (38.1mm)	1/2" (12.7mm)
DCS-50-V-150	1-1/2" (38.1mm)	1/2" (12.7mm)
DCS-50-200	2" (50.8mm)	1/2" (12.7mm)
DCS-50-V-200	2" (50.8mm)	1/2" (12.7mm)
DCS-50-300	3" (76.2mm)	1/2" (12.7mm)
DCS-50-V-300	3" (76.2mm)	1/2" (12.7mm)
DCS-50-400	4" (101.6mm)	1/2" (12.7mm)
DCS-50-V-400	4" (101.6mm)	1/2" (12.7mm)
<hr/>		
DCS-625-50	1/2" (12.7mm)	5/8" (15.9mm)
DCS-625-V-50	1/2" (12.7mm)	5/8" (15.9mm)
DCS-625-75	3/4" (19.1mm)	5/8" (15.9mm)
DCS-625-V-75	3/4" (19.1mm)	5/8" (15.9mm)
DCS-625-100	1" (25.4mm)	5/8" (15.9mm)
DCS-625-V-100	1" (25.4mm)	5/8" (15.9mm)
DCS-625-150	1-1/2" (38.1mm)	5/8" (15.9mm)
DCS-625-V-150	1-1/2" (38.1mm)	5/8" (15.9mm)
DCS-625-200	2" (50.8mm)	5/8" (15.9mm)
DCS-625-V-200	2" (50.8mm)	5/8" (15.9mm)
DCS-625-300	3" (76.2mm)	5/8" (15.9mm)
DCS-625-V-300	3" (76.2mm)	5/8" (15.9mm)
DCS-625-400	4" (101.6mm)	5/8" (15.9mm)
DCS-625-V-400	4" (101.6mm)	5/8" (15.9mm)



© 2003 Pittcon Industries

*West*

17070 Green Drive  
City of Industry, CA 91745  
Phone: (626) 839-9100  
Fax: (626) 839-0258

3330 W. Flower Street  
Phoenix, AZ 85017  
Phone: (602) 233-9100  
Fax: (602) 233-9400

**Pittcon  
Industries**

DIVISION OF PITTCON ARCHITECTURAL METALS, LLC

800 637-7638

*East*

6409 Rhode Island Ave.  
Riverdale, MD 20737  
Phone: (301) 927-1000  
Fax: (301) 699-8690

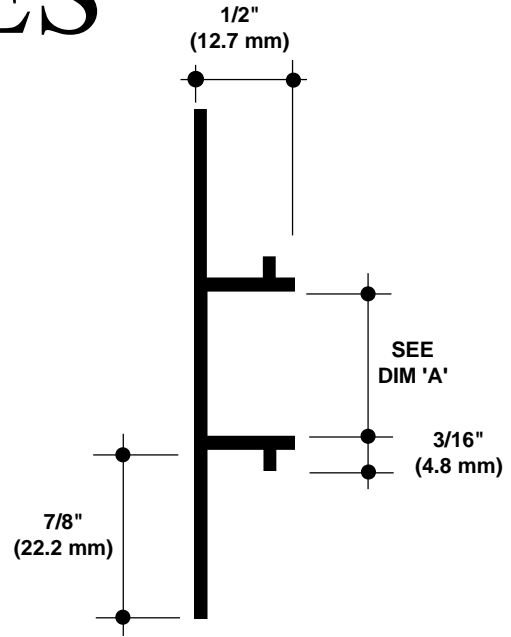
# DCS-WR SERIES CHANNEL SCREED

Specify as: Pittcon Plaster Molding

Model No. DCS-WR-xx-xxx  
DCS-WR-xx-V-xxx (vented)

MATERIAL: Aluminum alloy.....6063 T5  
Finish.....Clear Anodized  
Thickness......050" nominal

Many optional finishes are available. Consult factory for pricing and availability. Finishes meet or exceed AAMA standards for scratches or blemishes.

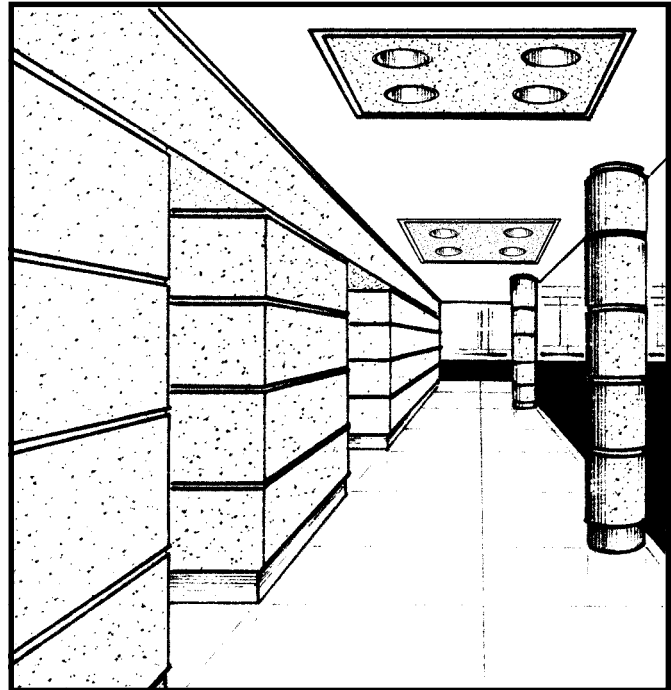


NO SCALE

TYPICAL SECTION

Model No.	Width-Dim 'A'	Depth
-----------	---------------	-------

DCS-WR-50-25	1/4" (6.4mm)	1/2" (12.7mm)
DCS-WR-50-50	1/2" (12.7mm)	1/2" (12.7mm)
DCS-WR-50-75	3/4" (19.1mm)	1/2" (12.7mm)
DCS-WR-50-V-75	3/4" (19.1mm)	1/2" (12.7mm)
DCS-WR-50-150	1-1/2" (76.2mm)	1/2" (12.7mm)
DCS-WR-50-V-150	1-1/2" (76.2mm)	1/2" (12.7mm)



©2003 Pittcon Industries

*West*

17070 Green Drive  
City of Industry, CA 91745  
Phone: (626) 839-9100  
Fax: (626) 839-0258

3330 W. Flower Street  
Phoenix, AZ 85017  
Phone: (602) 233-9100  
Fax: (602) 233-9400

**Pittcon  
Industries**

DIVISION OF PITTCON ARCHITECTURAL METALS, LLC

800 637-7638

*East*

6409 Rhode Island Ave.  
Riverdale, MD 20737  
Phone: (301) 927-1000  
Fax: (301) 699-8690

# FDM SERIES

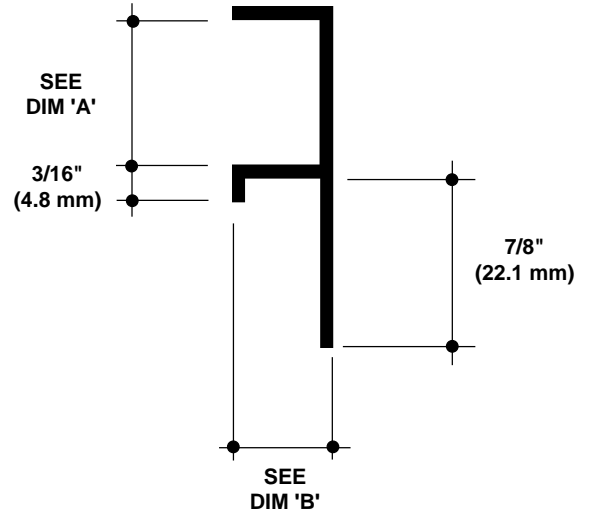
## 'F' MOLD

Specify as: Pittcon Plaster Molding

Model No. FDM-xx-xxx  
FDM-xx-V-xxx (vented)

MATERIAL: Aluminum alloy.....6063 T5  
Finish.....Clear Anodized  
Thickness......050" nominal

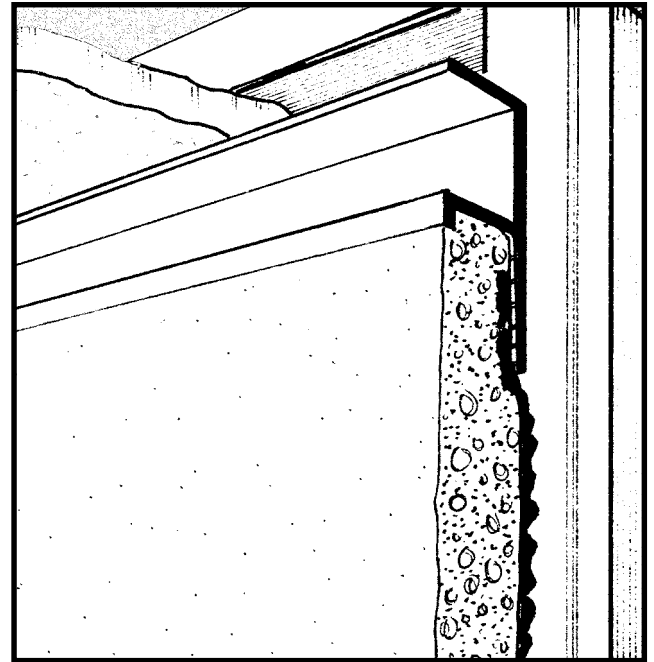
Many optional finishes are available. Consult factory for pricing and availability. Finishes meet or exceed AAMA standards for scratches or blemishes.



NO SCALE

TYPICAL SECTION

Model No.	Width-Dim 'A'	Depth-Dim 'B'
FDM-50-50	1/2" (12.7mm)	1/2" (12.7mm)
FDM-50-75	3/4" (19.1mm)	1/2" (12.7mm)
FDM-50-V-75	3/4" (19.1mm)	1/2" (12.7mm)
FDM-50-100	1" (25.4mm)	1/2" (12.7mm)
FDM-50-V-100	1" (25.4mm)	1/2" (12.7mm)
FDM-50-150	1-1/2" (38.1mm)	1/2" (12.7mm)
FDM-50-V-150	1-1/2" (38.1mm)	1/2" (12.7mm)
FDM-50-200	2" (50.8mm)	1/2" (12.7mm)
FDM-50-V-200	2" (50.8mm)	1/2" (12.7mm)
FDM-50-300	3" (76.2mm)	1/2" (12.7mm)
FDM-50-V-300	3" (76.2mm)	1/2" (12.7mm)
<hr/>		
FDM-625-50	1/2" (12.7mm)	5/8" (15.9mm)
FDM-625-75	3/4" (19.1mm)	5/8" (15.9mm)
FDM-625-V-75	3/4" (19.1mm)	5/8" (15.9mm)
FDM-625-100	1" (25.4mm)	5/8" (15.9mm)
FDM-625-V-100	1" (25.4mm)	5/8" (15.9mm)
FDM-625-150	1-1/2" (38.1mm)	5/8" (15.9mm)
FDM-625-V-150	1-1/2" (38.1mm)	5/8" (15.9mm)
FDM-625-200	2" (50.8mm)	5/8" (15.9mm)
FDM-625-V-200	2" (50.8mm)	5/8" (15.9mm)
FDM-625-300	3" (76.2mm)	5/8" (15.9mm)
FDM-625-V-300	3" (76.2mm)	5/8" (15.9mm)



© 2003 Pittcon Industries

*West*

17070 Green Drive  
City of Industry, CA 91745  
Phone: (626) 839-9100  
Fax: (626) 839-0258

3330 W. Flower Street  
Phoenix, AZ 85017  
Phone: (602) 233-9100  
Fax: (602) 233-9400

**Pittcon  
Industries**

DIVISION OF PITTCON ARCHITECTURAL METALS, LLC

800 637-7638

*East*

6409 Rhode Island Ave.  
Riverdale, MD 20737  
Phone: (301) 927-1000  
Fax: (301) 699-8690

# FDM-WR SERIES

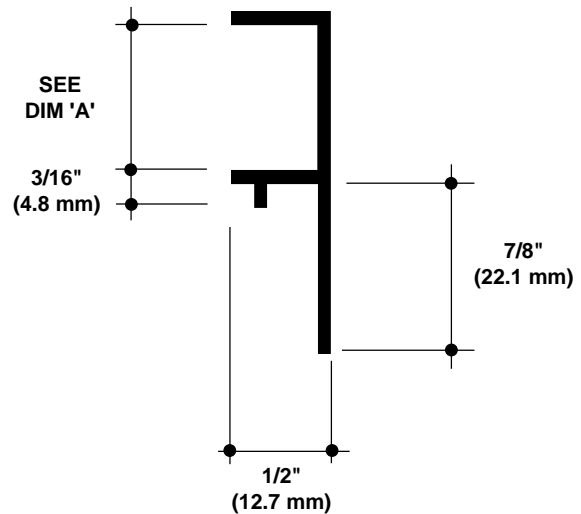
## 'F' MOLD

Specify as: Pittcon Plaster Molding

Model No. FDM-WR-xx-xxx  
 FDM-WR-xx-V-xxx (vented)

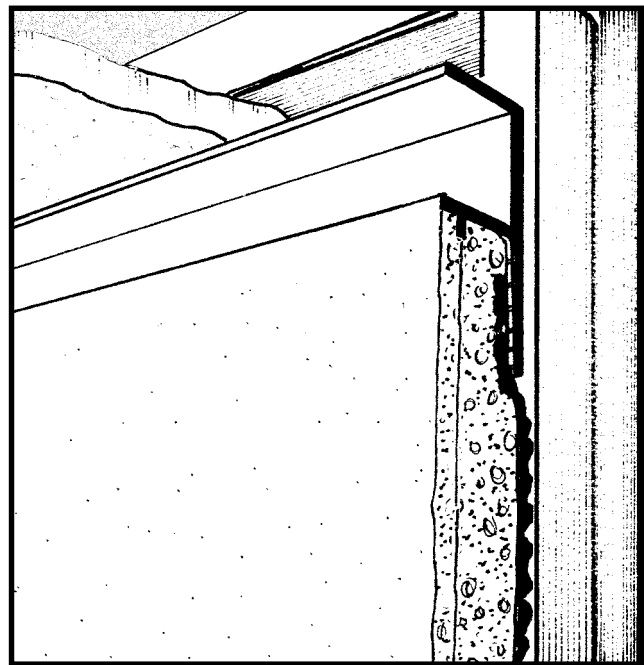
MATERIAL: Aluminum alloy.....6063 T5  
 Finish.....Clear Anodized  
 Thickness......050" nominal

Many optional finishes are available. Consult factory for pricing and availability. Finishes meet or exceed AAMA standards for scratches or blemishes.



NO SCALE TYPICAL SECTION

Model No.	Width-Dim 'A'	Depth
FDM-WR-50-25	1/4" (6.4mm)	1/2" (12.7mm)
FDM-WR-50-50	1/2" (12.7mm)	1/2" (12.7mm)
FDM-WR-50-75	3/4" (19.1mm)	1/2" (12.7mm)
FDM-WR-50-V-75	3/4" (19.1mm)	1/2" (12.7mm)
FDM-WR-50-150	1-1/2" (38.1mm)	1/2" (12.7mm)
FDM-WR-50-V-150	1-1/2" (38.1mm)	1/2" (12.7mm)



©2003 Pittcon Industries

*West*

17070 Green Drive  
 City of Industry, CA 91745  
 Phone: (626) 839-9100  
 Fax: (626) 839-0258

3330 W. Flower Street  
 Phoenix, AZ 85017  
 Phone: (602) 233-9100  
 Fax: (602) 233-9400

**Pittcon Industries**

DIVISION OF PITTCO ARCHITECTURAL METALS, LLC

800 637-7638

*East*

6409 Rhode Island Ave.  
 Riverdale, MD 20737  
 Phone: (301) 927-1000  
 Fax: (301) 699-8690

# TDM SERIES

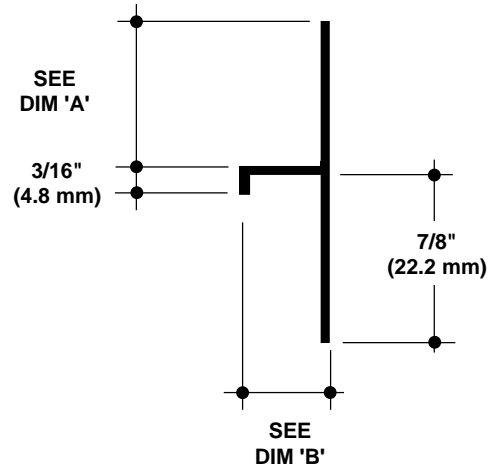
## 'T' MOLD

Specify as: **Pittcon Plaster Molding**

Model No. **TDM-xx-xxx**  
**TDM-xx-V-xxx (vented)**

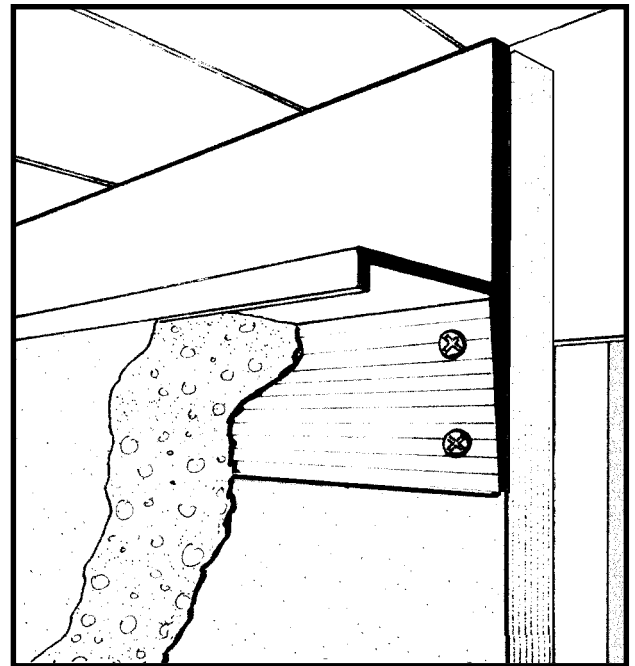
MATERIAL: Aluminum alloy.....6063 T5  
 Finish.....Clear Anodized  
 Thickness......050" nominal

Many optional finishes are available. Consult factory for pricing and availability. Finishes meet or exceed AAMA standards for scratches or blemishes.



**NO SCALE** **TYPICAL SECTION**

Model No.	Width-Dim 'A'	Depth
TDM-50-50	1/2" (12.7mm)	1/2" (12.7mm)
TDM-50-V-50	1/2" (12.7mm)	1/2" (12.7mm)
TDM-50-75	3/4" (19.1mm)	1/2" (12.7mm)
TDM-50-V-75	3/4" (19.1mm)	1/2" (12.7mm)
TDM-50-100	1" (25.4mm)	1/2" (12.7mm)
TDM-50-V-100	1" (25.4mm)	1/2" (12.7mm)
TDM-50-150	1-1/2" (38.1mm)	1/2" (12.7mm)
TDM-50-V-150	1-1/2" (38.1mm)	1/2" (12.7mm)
TDM-50-200	2" (50.8mm)	1/2" (12.7mm)
TDM-50-V-200	2" (50.8mm)	1/2" (12.7mm)
<hr/>		
TDM-625-75	3/4" (19.1mm)	5/8" (15.9mm)
TDM-625-V-75	3/4" (19.1mm)	5/8" (15.9mm)
TDM-625-100	1" (25.4mm)	5/8" (15.9mm)
TDM-625-V-100	1" (25.4mm)	5/8" (15.9mm)
TDM-625-150	1.5" (38.1mm)	5/8" (15.9mm)
TDM-625-V-150	1.5" (38.1mm)	5/8" (15.9mm)
TDM-625-200	2" (50.8mm)	5/8" (15.9mm)
TDM-625-V-200	2" (50.8mm)	5/8" (15.9mm)



© 2003 Pittcon Industries

*West*

17070 Green Drive  
 City of Industry, CA 91745  
 Phone: (626) 839-9100  
 Fax: (626) 839-0258

3330 W. Flower Street  
 Phoenix, AZ 85017  
 Phone: (602) 233-9100  
 Fax: (602) 233-9400

**Pittcon Industries**

DIVISION OF PITTCON ARCHITECTURAL METALS, LLC

800 637-7638

*East*

6409 Rhode Island Ave.  
 Riverdale, MD 20737  
 Phone: (301) 927-1000  
 Fax: (301) 699-8690

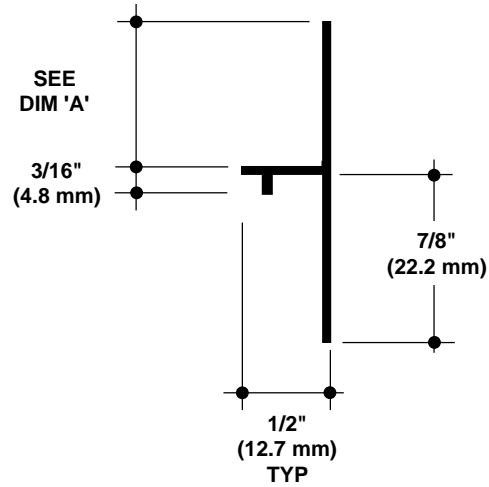
# TRM-WR SERIES 'T' MOLD

Specify as: Pittcon Plaster Molding

Model No. TRM-WR-xx-xxx  
TRM-WR-xx-V-xxx (vented)

MATERIAL: Aluminum alloy.....6063 T5  
Finish.....Clear Anodized  
Thickness......050" nominal

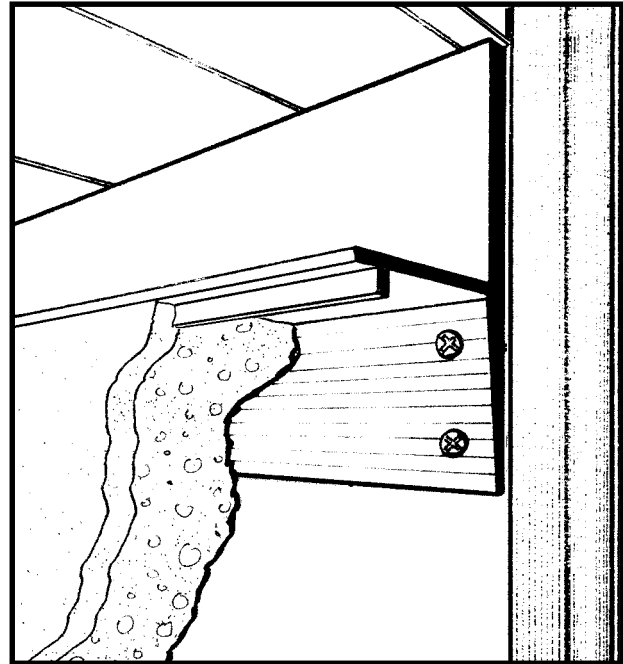
Many optional finishes are available. Consult factory for pricing and availability. Finishes meet or exceed AAMA standards for scratches or blemishes.



NO SCALE

TYPICAL SECTION

Model No.	Width-Dim 'A'	Depth
TRM-WR-50-50	1/2" (12.7mm)	1/2" (12.7mm)
TRM-WR-50-75	3/4" (19.1mm)	1/2" (12.7mm)
TRM-WR-50-V-75	3/4" (19.1mm)	1/2" (12.7mm)
TRM-WR-50-150	1-1/2" (38.1mm)	1/2" (12.7mm)
TRM-WR-50-V-150	1-1/2" (38.1mm)	1/2" (12.7mm)



©2003 Pittcon Industries

*West*

17070 Green Drive  
City of Industry, CA 91745  
Phone: (626) 839-9100  
Fax: (626) 839-0258

3330 W. Flower Street  
Phoenix, AZ 85017  
Phone: (602) 233-9100  
Fax: (602) 233-9400

**Pittcon  
Industries**

DIVISION OF PITTCO ARCHITECTURAL METALS, LLC

800 637-7638

*East*

6409 Rhode Island Ave.  
Riverdale, MD 20737  
Phone: (301) 927-1000  
Fax: (301) 699-8690

# JDM SERIES

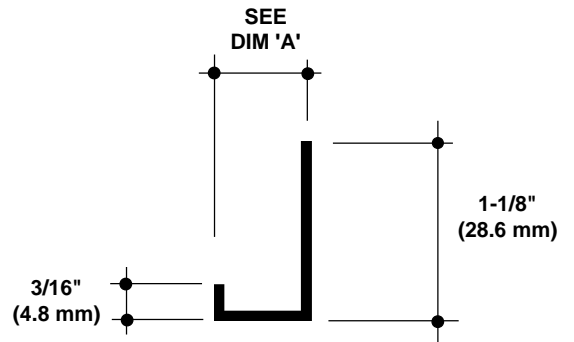
## 'J' MOLD

Specify as: Pittcon Plaster Molding

Model No. JDM-xx

MATERIAL: Aluminum alloy.....6063 T5  
 Finish.....Clear Anodized  
 Thickness......050" nominal

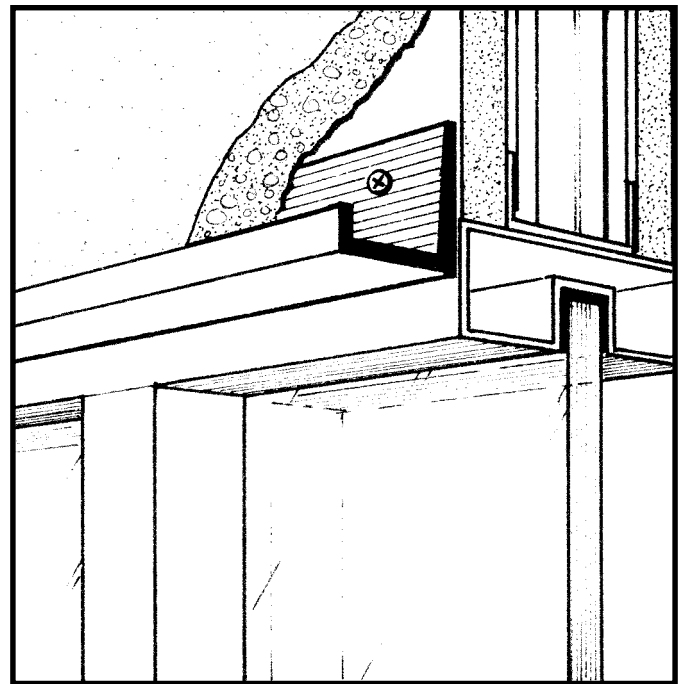
Many optional finishes are available. Consult factory for pricing and availability. Finishes meet or exceed AAMA standards for scratches or blemishes.



NO SCALE

TYPICAL SECTION

Model No.	Depth-Dim 'A'
JDM-50	1/2" (12.7mm)
JDM-625	5/8" (15.9mm)



© 2003 Pittcon Industries

*West*

17070 Green Drive  
 City of Industry, CA 91745  
 Phone: (626) 839-9100  
 Fax: (626) 839-0258

3330 W. Flower Street  
 Phoenix, AZ 85017  
 Phone: (602) 233-9100  
 Fax: (602) 233-9400

**Pittcon Industries**

DIVISION OF PITTCON ARCHITECTURAL METALS, LLC

**800 637-7638**

*East*

6409 Rhode Island Ave.  
 Riverdale, MD 20737  
 Phone: (301) 927-1000  
 Fax: (301) 699-8690

# JDM-WR-50

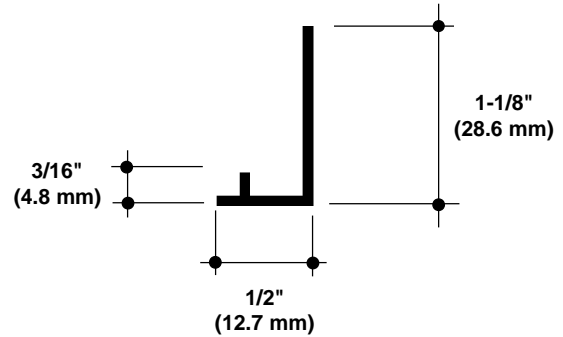
## 'J' MOLD

Specify as: Pittcon Plaster Molding

Model No. JDM-WR-50

MATERIAL: Aluminum alloy.....6063 T5  
 Finish.....Clear Anodized  
 Thickness......050" nominal

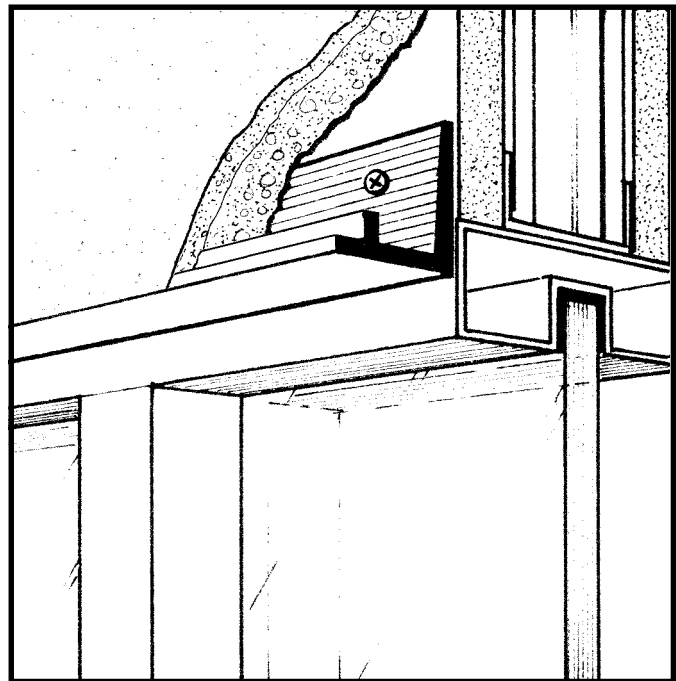
Many optional finishes are available. Consult factory for pricing and availability. Finishes meet or exceed AAMA standards for scratches or blemishes.



NO SCALE

TYPICAL SECTION

Model No.	Depth
JDM-WR-50	1/2" (12.7mm)



© 2003 Pittcon Industries

*West*

17070 Green Drive  
 City of Industry, CA 91745  
 Phone: (626) 839-9100  
 Fax: (626) 839-0258

3330 W. Flower Street  
 Phoenix, AZ 85017  
 Phone: (602) 233-9100  
 Fax: (602) 233-9400

**Pittcon Industries**

DIVISION OF PITTCOON ARCHITECTURAL METALS, LLC

**800 637-7638**

*East*

6409 Rhode Island Ave.  
 Riverdale, MD 20737  
 Phone: (301) 927-1000  
 Fax: (301) 699-8690

# DCS-2 CONTROL

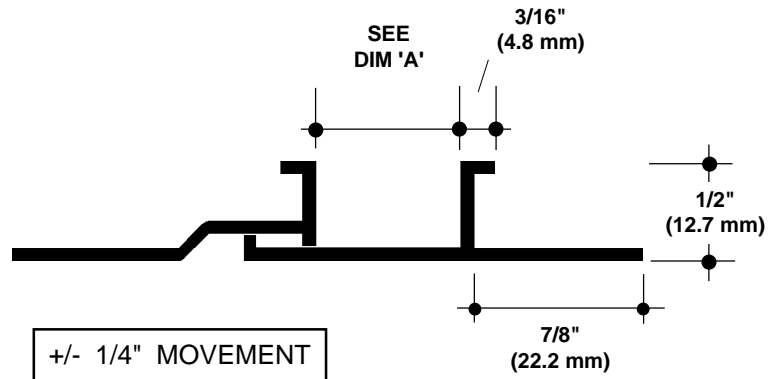
## 2 PIECE CONTROL SCREED

Specify as: Pittcon Plaster Molding

Model No. DCS-2-50-xxx

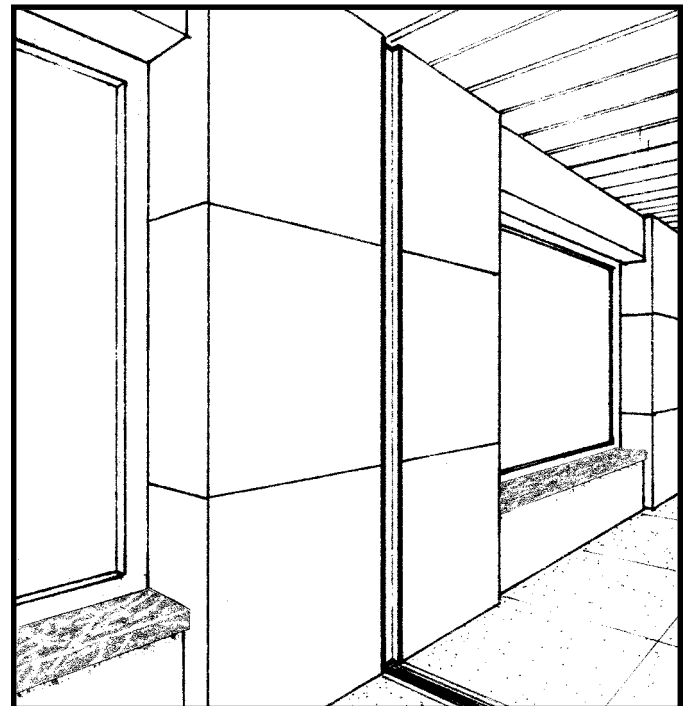
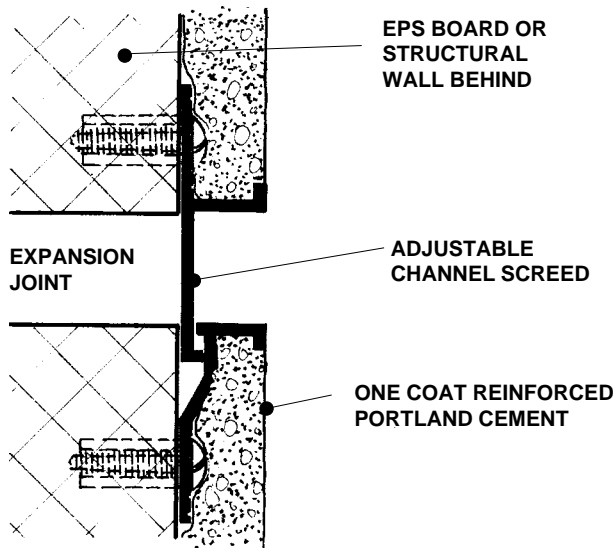
MATERIAL: Aluminum alloy.....6063 T5  
 Finish.....Clear Anodized  
 Thickness......050" nominal

Many optional finishes are available. Consult factory for pricing and availability. Finishes meet or exceed AAMA standards for scratches or blemishes.



NO SCALE TYPICAL SECTION

Model No.	Width-Dim 'A'	Depth
DCS-2-50-75	3/4" (19.1mm)	1/2" (12.7mm)
DCS-2-50-100	1" (25.4mm)	1/2" (12.7mm)
DCS-2-50-150	1-1/2" (38.1mm)	1/2" (12.7mm)
DCS-2-50-200	2" (50.8mm)	1/2" (12.7mm)



© 2003 Pittcon Industries

*West*

17070 Green Drive  
 City of Industry, CA 91745  
 Phone: (626) 839-9100  
 Fax: (626) 839-0258

3330 W. Flower Street  
 Phoenix, AZ 85017  
 Phone: (602) 233-9100  
 Fax: (602) 233-9400

**Pittcon Industries**

DIVISION OF PITTCON ARCHITECTURAL METALS, LLC

800 637-7638

*East*

6409 Rhode Island Ave.  
 Riverdale, MD 20737  
 Phone: (301) 927-1000  
 Fax: (301) 699-8690

# DCS-WR-2 CONTROL

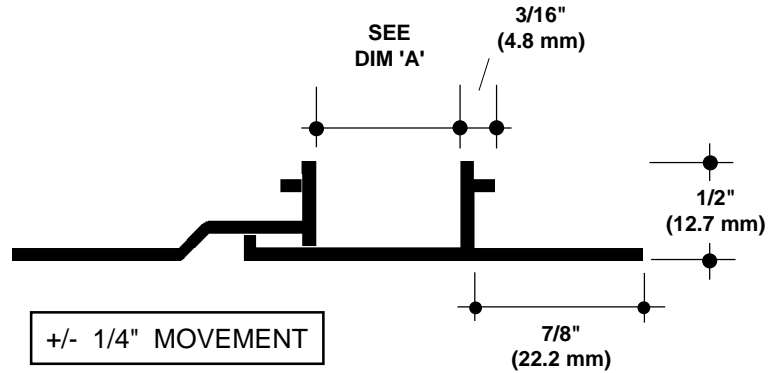
## 2 PIECE CONTROL SCREED

Specify as: Pittcon Plaster Molding

Model No. DCS-WR-2-50-xxx

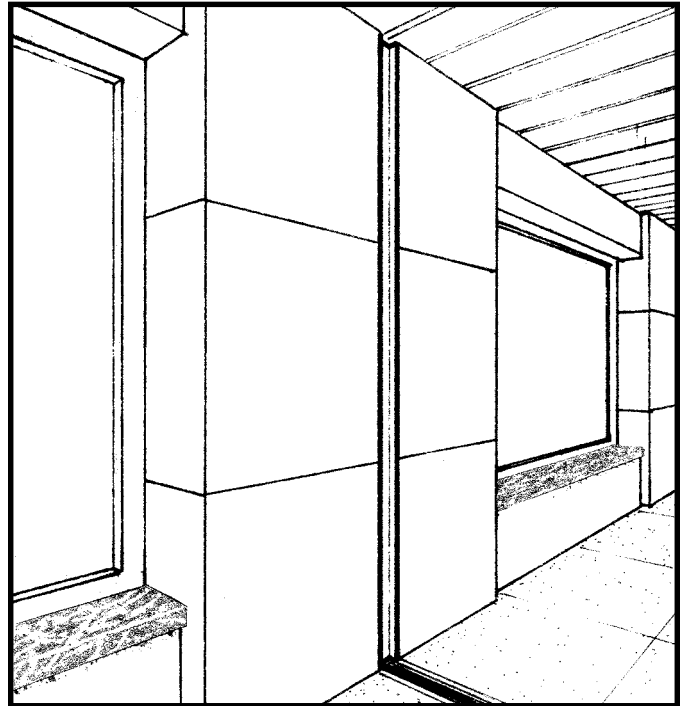
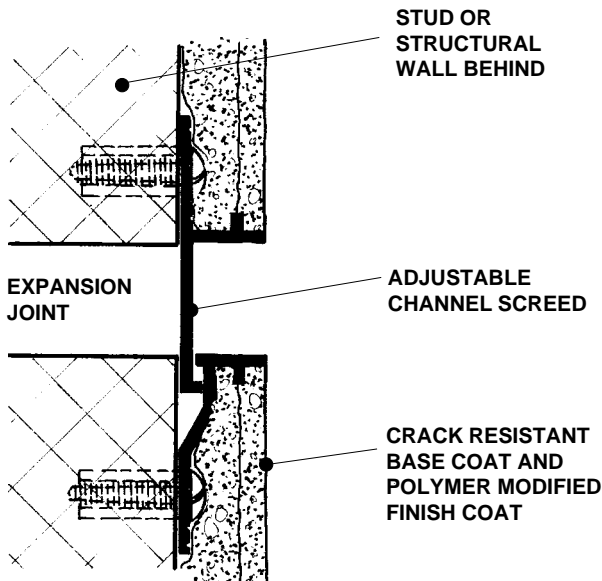
MATERIAL: Aluminum alloy.....6063 T5  
 Finish.....Clear Anodized  
 Thickness......050" nominal

Many optional finishes are available. Consult factory for pricing and availability. Finishes meet or exceed AAMA standards for scratches or blemishes.



NO SCALE TYPICAL SECTION

Model No.	Width-Dim 'A'	Depth
DCS-WR-2-50-75	3/4" (19.1mm)	1/2" (12.7mm)
DCS-WR-2-50-150	1-1/2" (38.1mm)	1/2" (12.7mm)



©2003 Pittcon Industries

*West*

17070 Green Drive  
 City of Industry, CA 91745  
 Phone: (626) 839-9100  
 Fax: (626) 839-0258

3330 W. Flower Street  
 Phoenix, AZ 85017  
 Phone: (602) 233-9100  
 Fax: (602) 233-9400

**Pittcon Industries**

DIVISION OF PITTCO ARCHITECTURAL METALS, LLC

800 637-7638

*East*

6409 Rhode Island Ave.  
 Riverdale, MD 20737  
 Phone: (301) 927-1000  
 Fax: (301) 699-8690

# DS-50-875

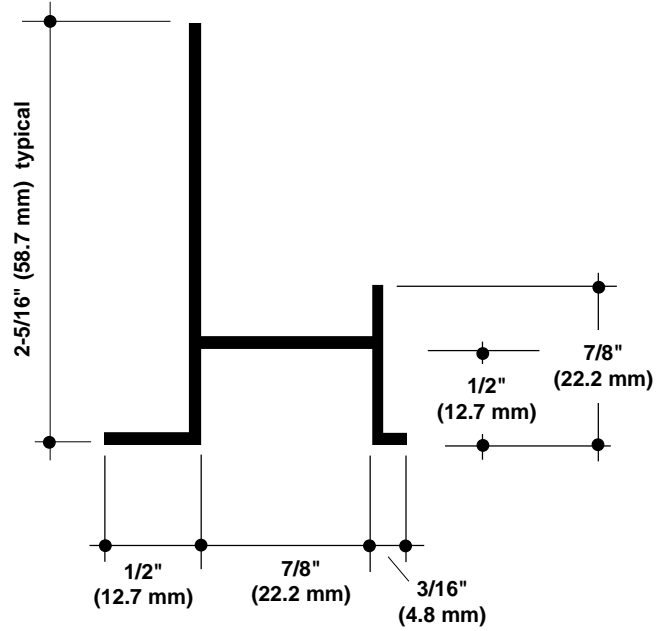
## DRIP SCREED

Specify as: Pittcon Plaster Molding

Model No. DS-50-875  
DS-50-V-875

MATERIAL: Aluminum alloy.....6063 T5  
Finish.....Clear Anodized  
Thickness......050" nominal

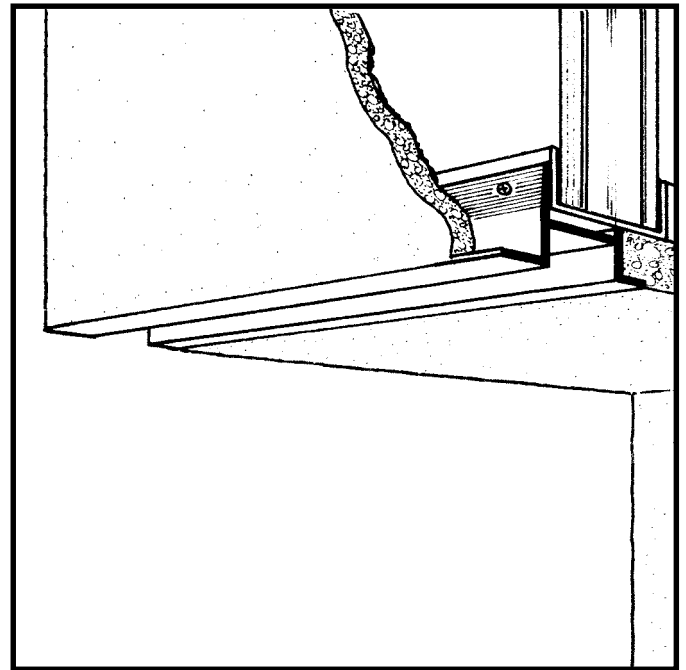
Many optional finishes are available. Consult factory for pricing and availability. Finishes meet or exceed AAMA standards for scratches or blemishes.



NO SCALE

TYPICAL SECTION

Model No.	Width	Reveal Depth
DS-50-875	7/8" (22.2mm)	1/2" (12.7mm)
DS-50-V-875	7/8" (22.2mm)	1/2" (12.7mm)



© 2003 Pittcon Industries

*West*

17070 Green Drive  
City of Industry, CA 91745  
Phone: (626) 839-9100  
Fax: (626) 839-0258

3330 W. Flower Street  
Phoenix, AZ 85017  
Phone: (602) 233-9100  
Fax: (602) 233-9400

**Pittcon Industries**

DIVISION OF PITTCON ARCHITECTURAL METALS, LLC

800 637-7638

*East*

6409 Rhode Island Ave.  
Riverdale, MD 20737  
Phone: (301) 927-1000  
Fax: (301) 699-8690

# DS-WR-50-875

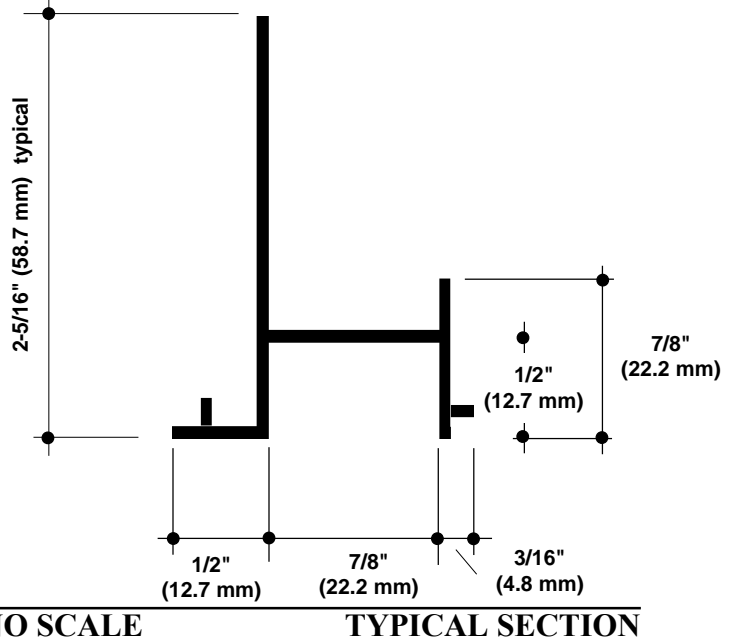
## DRIP SCREED

Specify as: Pittcon Plaster Molding

Model No. DS-WR-50-875  
DS-WR-50-V-875

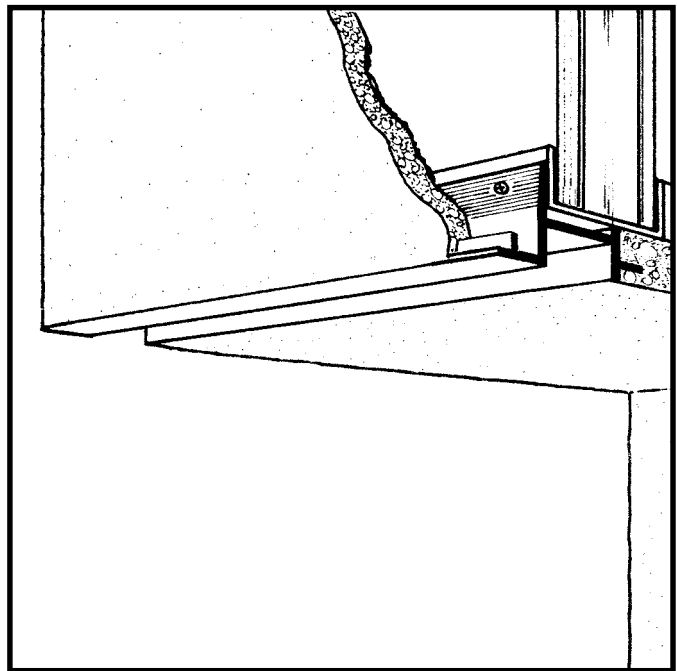
MATERIAL: Aluminum alloy.....6063 T5  
Finish.....Clear Anodized  
Thickness......050" nominal

Many optional finishes are available. Consult factory for pricing and availability. Finishes meet or exceed AAMA standards for scratches or blemishes.



Model No.	Width	Reveal Depth
-----------	-------	--------------

DS-WR-50-875	7/8" (22.2mm)	1/2" (12.7mm)
DS-WR-50-V-875	7/8" (22.2mm)	1/2" (12.7mm)



©2003 Pittcon Industries

*West*

17070 Green Drive  
City of Industry, CA 91745  
Phone: (626) 839-9100  
Fax: (626) 839-0258

3330 W. Flower Street  
Phoenix, AZ 85017  
Phone: (602) 233-9100  
Fax: (602) 233-9400

**Pittcon  
Industries**

DIVISION OF PITTCON ARCHITECTURAL METALS, LLC

800 637-7638

*East*

6409 Rhode Island Ave.  
Riverdale, MD 20737  
Phone: (301) 927-1000  
Fax: (301) 699-8690

# XCM-50

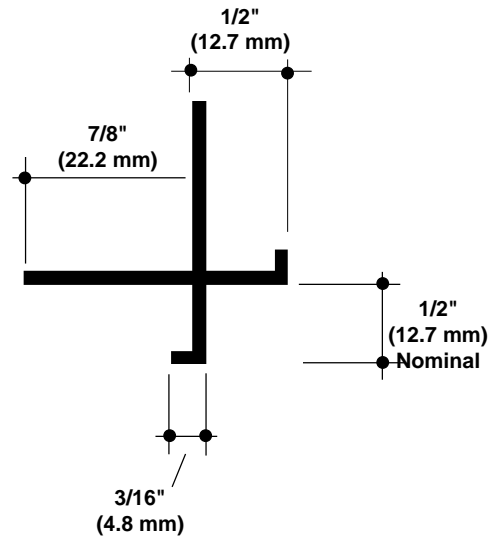
## 'X' CORNER MOLD

Specify as: Pittcon Plaster Molding

Model No. XCM-50

MATERIAL: Aluminum alloy.....6063 T5  
 Finish.....Clear Anodized  
 Thickness......050" nominal

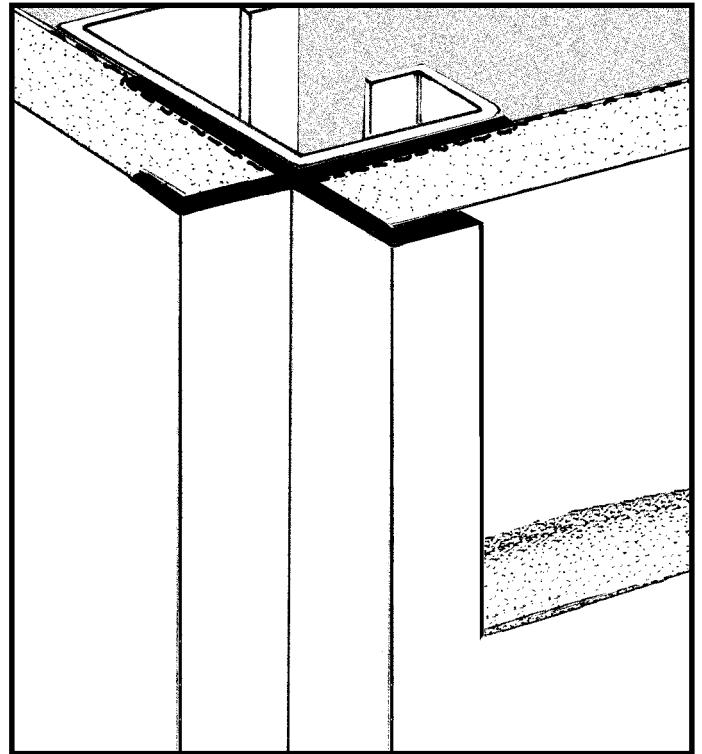
Many optional finishes are available. Consult factory for pricing and availability. Finishes meet or exceed AAMA standards for scratches or blemishes.



NO SCALE

TYPICAL SECTION

Model No.	Width	Depth
XCM-50	1/2" (12.7mm)	1/2" (12.7mm)



© 2003 Pittcon Industries

*West*

17070 Green Drive  
 City of Industry, CA 91745  
 Phone: (626) 839-9100  
 Fax: (626) 839-0258

3330 W. Flower Street  
 Phoenix, AZ 85017  
 Phone: (602) 233-9100  
 Fax: (602) 233-9400

**Pittcon Industries**

DIVISION OF PITTCOON ARCHITECTURAL METALS, LLC

800 637-7638

*East*

6409 Rhode Island Ave.  
 Riverdale, MD 20737  
 Phone: (301) 927-1000  
 Fax: (301) 699-8690

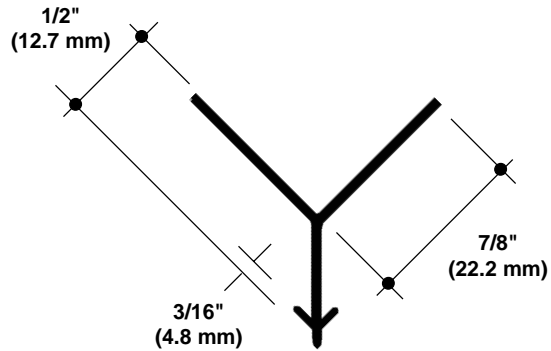
# CM-WR-50 CORNER MOLD

Specify as: Pittcon Plaster Molding

Model No. CM-WR-50

MATERIAL: Aluminum alloy.....6063 T5  
 Finish.....Clear Anodized  
 Thickness......050" nominal

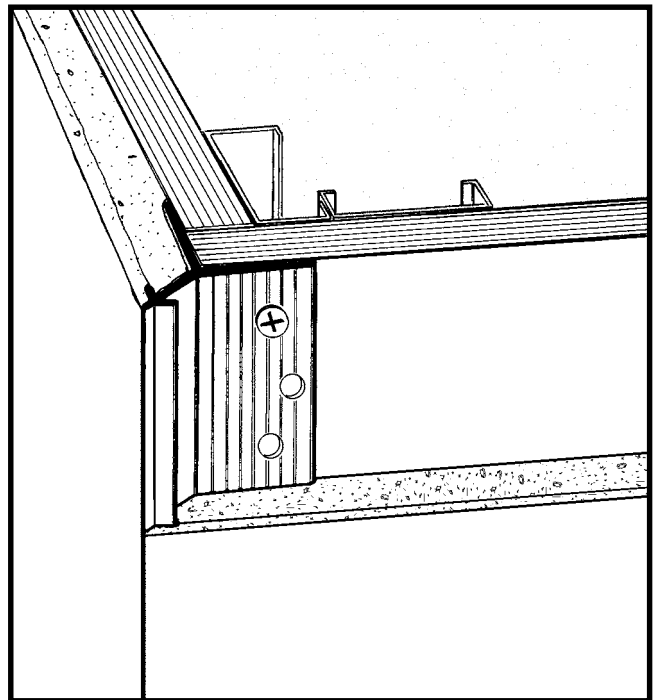
Many optional finishes are available. Consult factory for pricing and availability. Finishes meet or exceed AAMA standards for scratches or blemishes.



NO SCALE

TYPICAL SECTION

Model No.	Depth
CM-WR-50	1/2" (12.7mm)



© 2003 Pittcon Industries

*West*

17070 Green Drive  
 City of Industry, CA 91745  
 Phone: (626) 839-9100  
 Fax: (626) 839-0258

3330 W. Flower Street  
 Phoenix, AZ 85017  
 Phone: (602) 233-9100  
 Fax: (602) 233-9400

**Pittcon  
 Industries**

DIVISION OF PITTCON ARCHITECTURAL METALS, LLC

800 637-7638

*East*

6409 Rhode Island Ave.  
 Riverdale, MD 20737  
 Phone: (301) 927-1000  
 Fax: (301) 699-8690