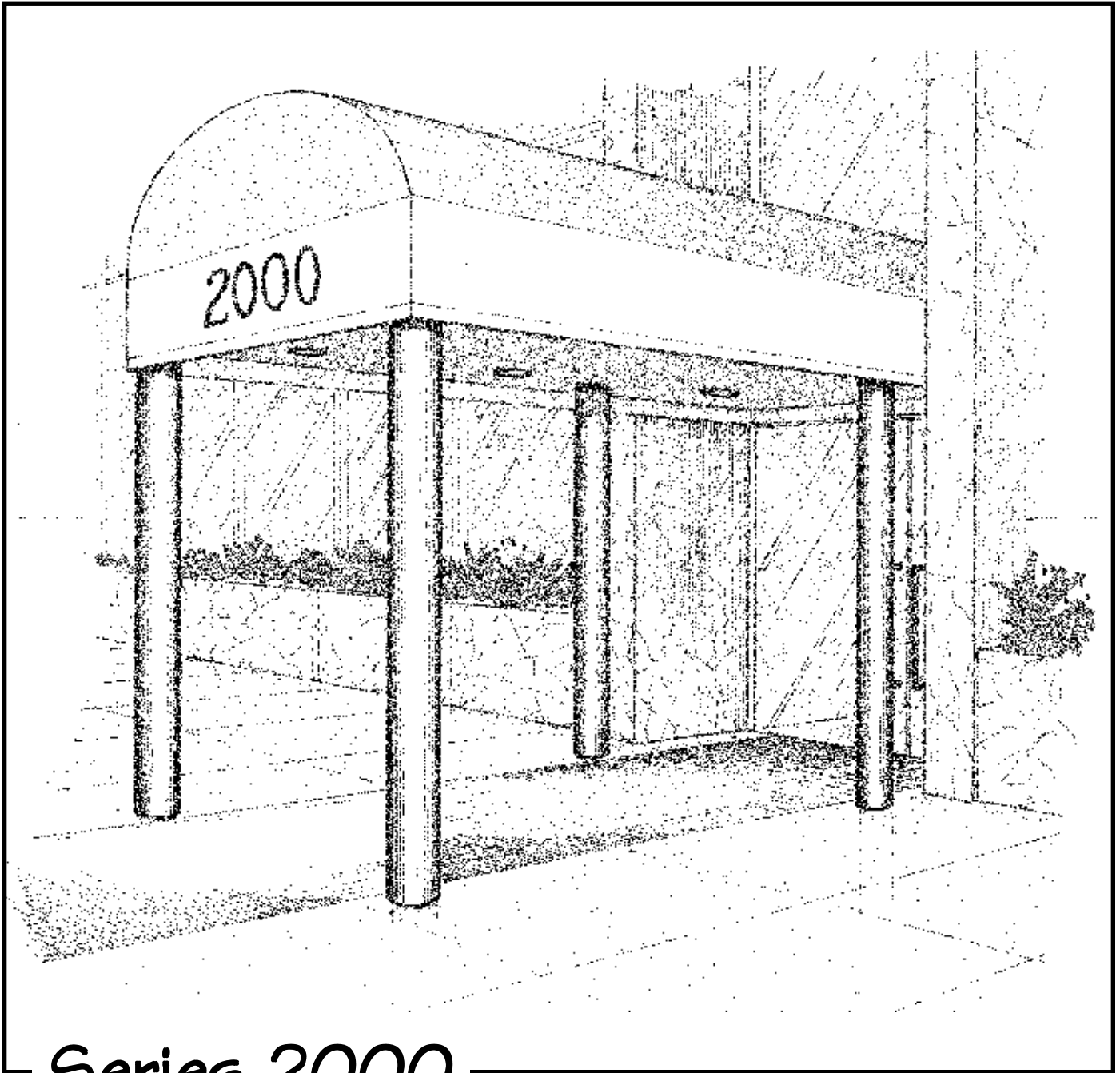


**Pittcon
Industries**

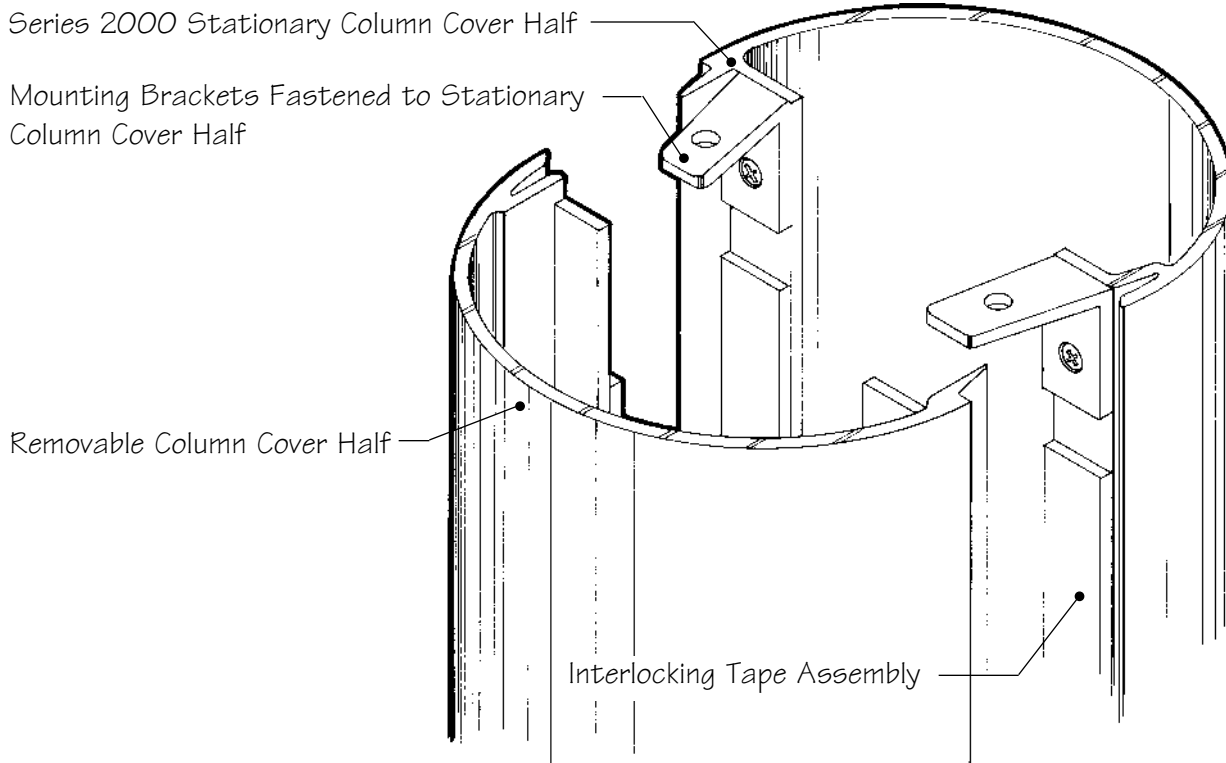
DIVISION OF PITTCON CUSTOM CORPORATION



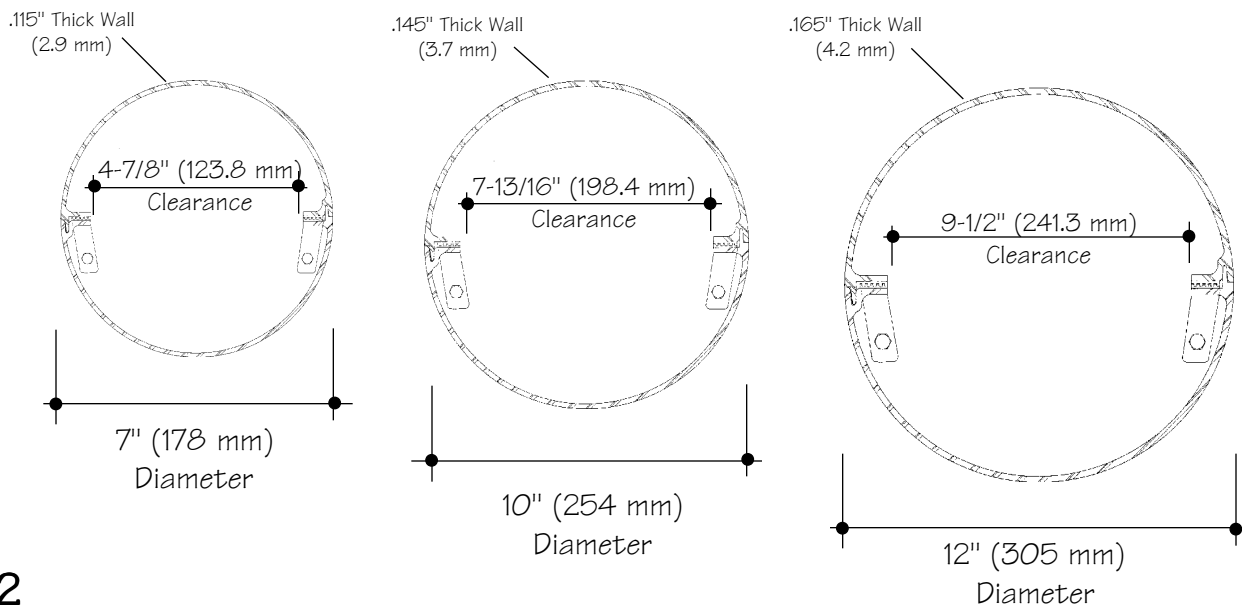
Series 2000

Column Covers

Series 2000 - Details



The SERIES 2000 is Pittcon's small diameter column cover system. They are extruded in halves of 6063 aluminum and are available in 7", 10" or 12" (178 mm, 254 mm or 305mm) diameter. Heights can be provided up to 12' (3.658 M) in most instances, with taller conditions available with the addition of stacking joints. Due to their ease of installation these column covers are the ideal solution for the concealment of small structural pipe columns not larger than 9-1/2" (241.3 mm) in diameter. The SERIES 2000 column covers feature a self-aligning, positive lock joint, which guarantees a perfect seam. They are available with most of the finish options available with our other column lines, and comes complete with it's own mounting brackets. The average installation time for the SERIES 2000 column cover is one hour.

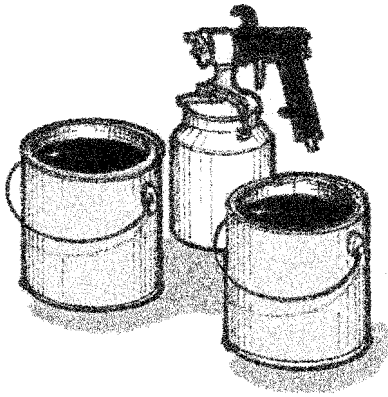


Series 2000 - Finishes

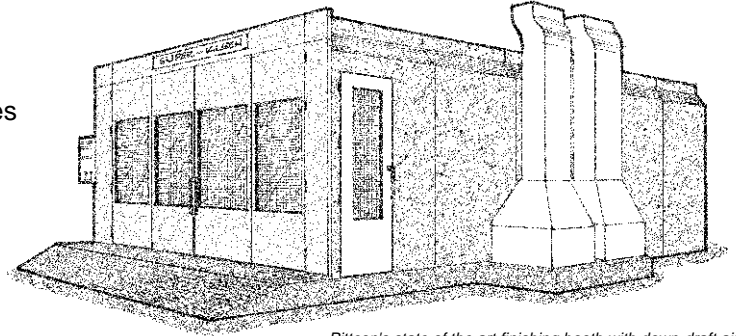
Some of the finishes available are:

Aluminum

- Clad with matte or high gloss plastic laminate finishes
- Clad with Acrovyn® laminate finishes
- Clad with finished or unfinished wood veneers
- Painted in a high gloss polyurethane finish
- Painted in a Megaflon® fluoropolymer finish
- Clad with clear anodized finish
- Clad with light, medium, or dark bronze Duranodic or black anodized finish
- Primed finish for field painting



Pittcon specializes in all types of the highest quality architectural paint finishes, including fluoropolymer, acrylic polyurethane enamel, acrylic lacquer, etc.



Pittcon's state of the art finishing booth with down-draft air filtration system assures maximum dust and temperature control.

Stainless steel Clad in 18ga thickness (.048" 1.2 mm)

- Brushed to a #4 finish
- Polished to a #8 finish
- Rigid-Tex® textured finishes
- Prismatic® colored finishes
- Custom Swirl Finish

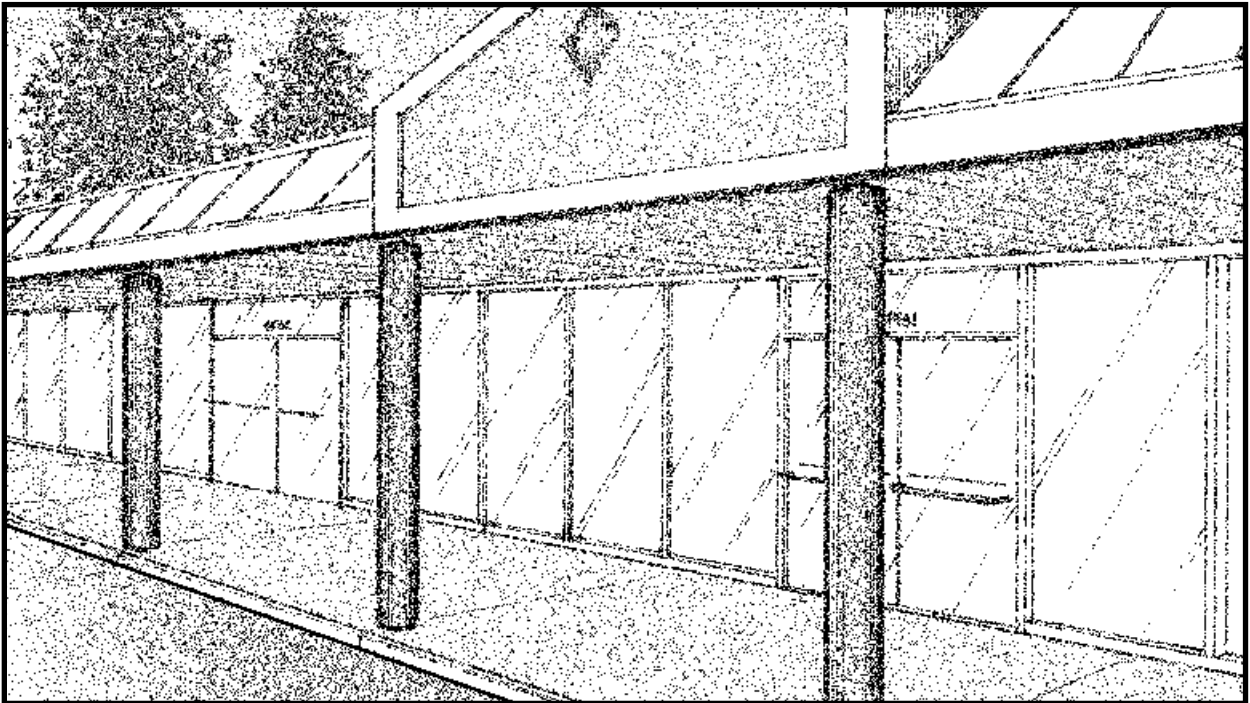
Muntz brass Clad in 16ga thickness (.051" 1.3 mm)

(Factory clearcoat available for an additional charge.)

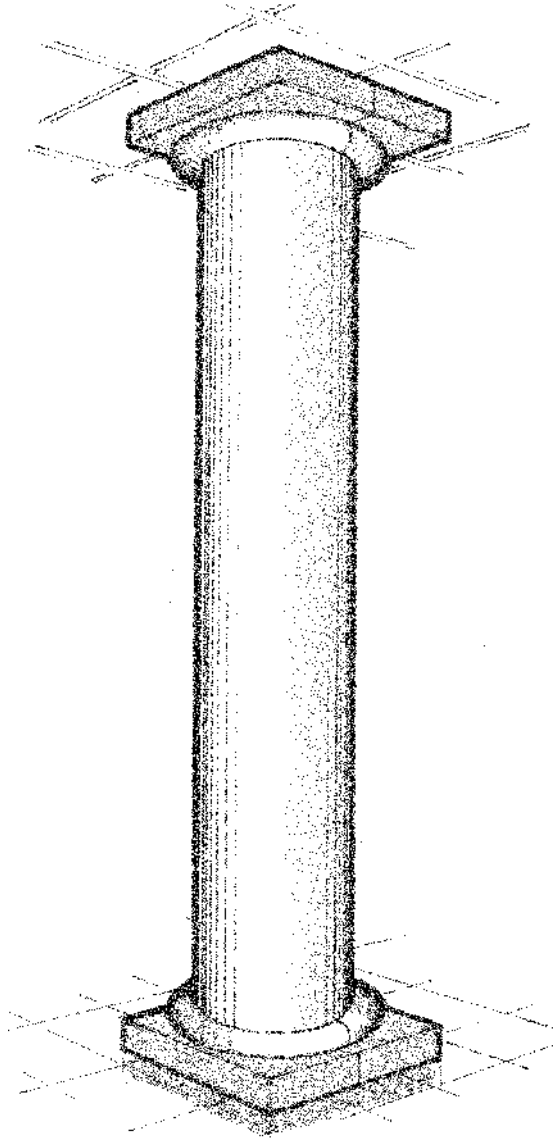
- Brushed to a #4 finish
- Polished to a #8 finish

Other materials and thicknesses are available as options. Factory primed or mill finish available for immediate delivery. Finishes meet or exceed AAMA standards for scratches or blemishes.

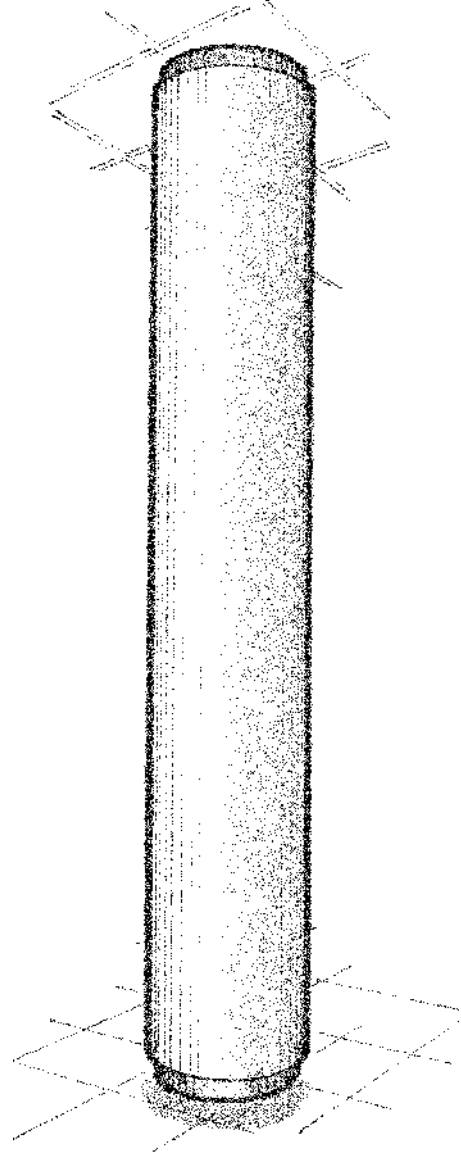
Megaflon® is a registered trademark of Keeler and Long, Inc.
Acrovyn® is a registered trademark of the Construction Specialties, Inc.
Rigid-Tex® is a registered trademark of Rigidized Metals Corp.
Prismatic® is a registered trademark of B & M Finishers, Inc.



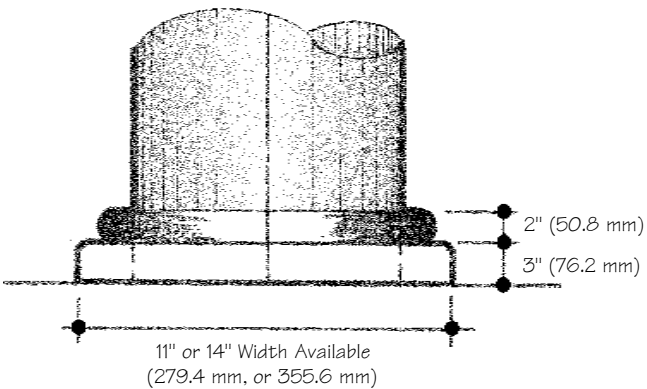
Series 2000 - Details



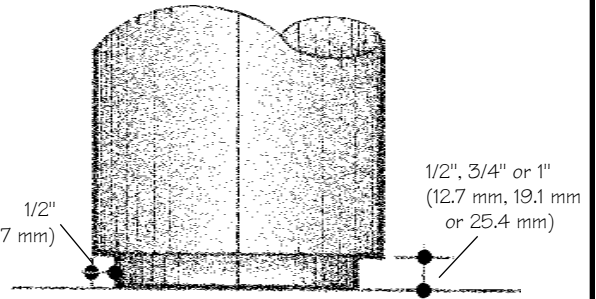
Optional Two Piece Capital and Base in Paintable Aluminum or Hardwood



Optional Top and Bottom Reveal Board Available in Most Finishes



Capital/Base Details
No Scale



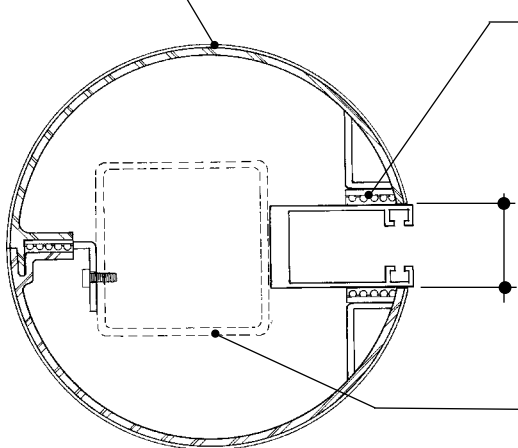
Reveal Details
No Scale

Series 2000 -Options



The SERIES 2000 column covers are available with factory opening for roll down security gate track.
(Track supplied by others)

Optional Stainless
Steel or Other
Cladding

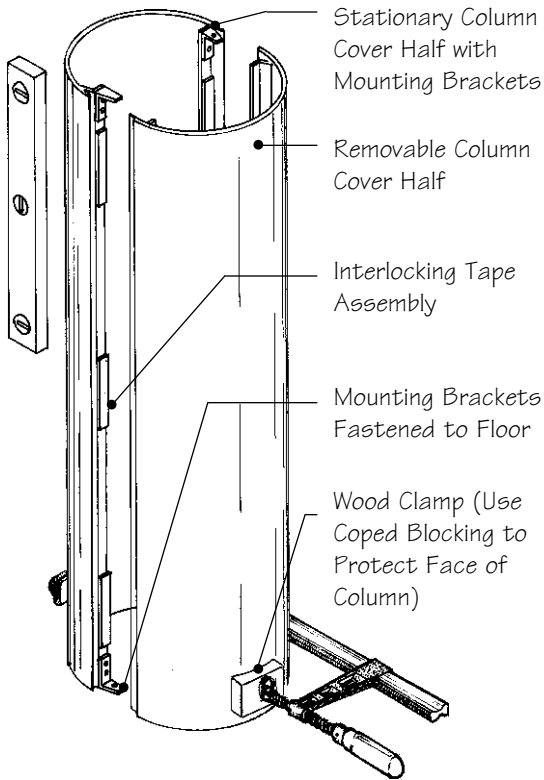


Special Interlock Assembly locks
Column Cover to Grill Track

Specify
Track Width

Structural Post Inside or Other
Object to be Hidden

Series 2000 - Installation



Installation Details

No Scale

SERIES 2000 standard items

The SERIES 2000 column cover system consists of the following parts:

- 1) Two extruded aluminum column cover half sections
- 2) Four mounting brackets
- 3) Ten self tapping screws
- 4) One set of drawings / instructions
- 5) One wood clamp (one provided per order/project)

The following customer supplied items are also recommended:

- 1) Plumb bob & carpenter's level
- 2) Ramset or lag type masonry fasteners for mounting brackets

The proper positioning and anchoring of the "fixed" half of the SERIES 2000 column cover is the single most important aspect of installing. The "fixed" half must be properly plumbed and the mounting brackets securely fastened to the floor and ceiling in order for the adjoining column cover half to correctly install.

Typical Installation procedure

- 1) Fasten the mounting brackets to the 'fixed' half of the column cover, and then position it with a carpenter's level or plumb bob. Securely fasten top and bottom mounting brackets to the floor and ceiling, using approved masonry fasteners at the bottom, and sheet metal screws at the top. In order for the column cover to be properly stable, the top brackets must engage ceiling structure. If this is not possible then additional bracing should be run back to the structural member from the 'fixed' half.
- 2) Align remaining half of column cover with the 'fixed' half and starting at the top and working downward, engage into place utilizing the Pittcon supplied wood clamp.

SAMPLE SPECIFICATION

Section 05600 Architectural Metal Column Covers

Part 1 - General

1.01 Description of work

A. Furnish all material necessary for a complete installation of the SERIES 2000 column covers. Column covers to be self-aligning, positive interlock column cover system without exposed fasteners or supports.

1.02 Submittals

A. Submit product literature, specifications, information, and installation instructions.
 B. Submit complete shop drawings detailing quantities, sizes, configurations, and column attachment methods.

1.03 Quality Assurance

A. Manufacturer to have a minimum of ten years experience in the manufacturing of column covers.
 B. Manufacturer to inspect all aspects of the product to ensure that specifications have been met, and that they comply with approved shop drawings.
 C. Manufacturer shall issue a one year limited warranty ensuring product against defects in workmanship and materials.

Part 2 - Products

2.01 Acceptable Manufacturers:

Pittcon Industries
 6409 Rhode Island Ave.
 Riverdale, MD 20737

Pittcon Industries
 3330 W. Flower Street
 Phoenix, Arizona 85017

2.02 Materials

A. Column covers shall be extruded aluminum of .115" to .145" thickness with (specified finish) and fabricated in two vertically divided sections attached with demountable interlock assembly.
 B. All fasteners are to be concealed.
 C. All support structures to be supplied by column cover manufacturer.
 D. Column cover sections shall be supplied free of scratches and surface blemishes.

2.03 Fabrication

A. Column covers shall be manufactured to specific dimensions and tolerances, and accurately formed to radii shown on drawings.
 B. Column covers shall be fabricated in two vertically divided sections attached with a demountable interlock joint.
 C. Column covers shall be fabricated in single length heights of 12' where required.

Part 3 - Execution

3.01 Inspection & Installation

A. Contractor to inspect column covers upon receipt to ensure that no damage has occurred during shipment.
 B. Column cover to be correctly oriented and installed in accordance with manufacturer's shop drawings and installation instructions to ensure proper installation.
 C. Column cover to be erected plumb and level.

3.02 Cleaning & Protection

A. Contractor to clean all visible surfaces after installation.
 B. Contractor to protect column covers from damage by other trades.

Pittcon Industries Division Pittcon Custom Corporation

6409 Rhode Island Avenue
 Riverdale, Maryland 20737
 (800) 637-7638 , (301) 927-1000
 Fax: (301) 699-8690

3330 W. Flower Street
 Phoenix, Arizona 85043
 (800) 637-7638 , (602) 233-9100
 Fax: (602) 233-9400

Fabricated with Pride



Riverdale, Maryland-U.S